

# GBM

PRODUCT CATALOGUE



## ZOOMLION

# Index

|         |   |                          |
|---------|---|--------------------------|
| 01 - 02 | + | Welcome to GBM           |
| 03 - 04 | + | Zoomlion Brand           |
| 05 - 08 | + | Concrete Pump with Mixer |
| 09 - 24 | + | Concrete Pumps           |
| 25 - 28 | + | Truck Mixers             |



## Discover Our Solutions

Building with confidence starts with the right partner. At GBM, we understand that **every project is more than just concrete and steel**. It's about creating lasting results. That's why we proudly represent ZOOMLION, a brand known worldwide for **innovation, reliability, and performance**.

Our range of Truck Mounted Concrete Pumps and Truck Mixers is designed to empower your work with efficiency and precision. Whether you're tackling large-scale projects or ensuring smooth daily operations, **our solutions are built to keep you moving forward**.

But we don't just deliver equipment - **we stand by you at every step**. With expert guidance, dedicated support, and a trusted distributor network across South-East Europe, we're here to help you achieve your goals.

Explore our catalog and discover how **GBM and ZOOMLION can help you build stronger, smarter, and more successfully than ever before**.

Team  
GBM



# Welcome to GBM

At GBM, we are a trusted full-service dealership based in Austria with **extensive expertise in concrete pumping solutions**. We specialize in ZOOMLION concrete pumps and provide a wide range of spare parts for concrete pumps and truck mixers.

We provide solutions that support your projects from start to finish. **Our experts are always ready to provide professional help and advice.**



**Partner  
at your  
side.**





# Supporting Your Business, Every Step Forward

Our motto, "Partner at Your Side," reflects our commitment to being with you every step of the way.

Whether you're tackling a large-scale construction project or handling routine maintenance, **we stand by you with expert guidance, reliable machinery, and dedicated support.**

Your success is our priority, and we are here to ensure your projects run smoothly and efficiently.





# Zoomlion

The global giant ZOOMLION Heavy Industry Science & Technology Co., Ltd. is mainly engaged in developing and manufacturing high-tech equipment in the construction and agricultural industry.



**Vision  
creates  
future.**



# More than 30 years of innovation and development

With more than 30 years of innovation and development, the stock exchange listed company is now a global enterprise possessing **56 product lines** and nearly **600 industry-leading products**.



## Excellent performance and high quality

Zoomlion series of truck-mounted concrete pump have advanced technology.

The main components use world-excellent products, so this makes the machine have excellent performance and high quality.

ZOOMLION ranks first in the number of patents in the industry, owning 142 core technology patents which are applied to truck pumps.





# TRUCK MOUNTED CONCRETE PUMP WITH MIXER

These machines combine the three most important functions of concrete machines in a single vehicle: mixing, transport and distribution.



# ZL32X-4Z



**Note:** Standard version. Dimensions and weights depend on truck, pump model and equipment. Dimensions are in mm. Example based on Mercedes-Benz. For illustration only. Actual products may vary.

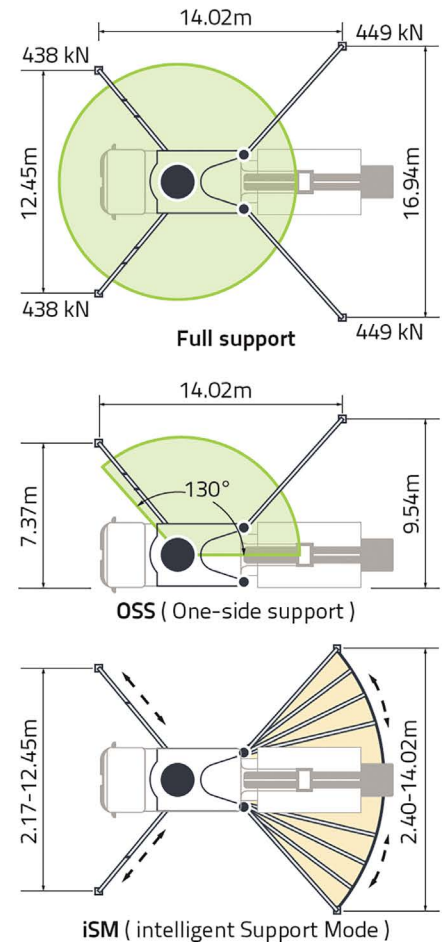
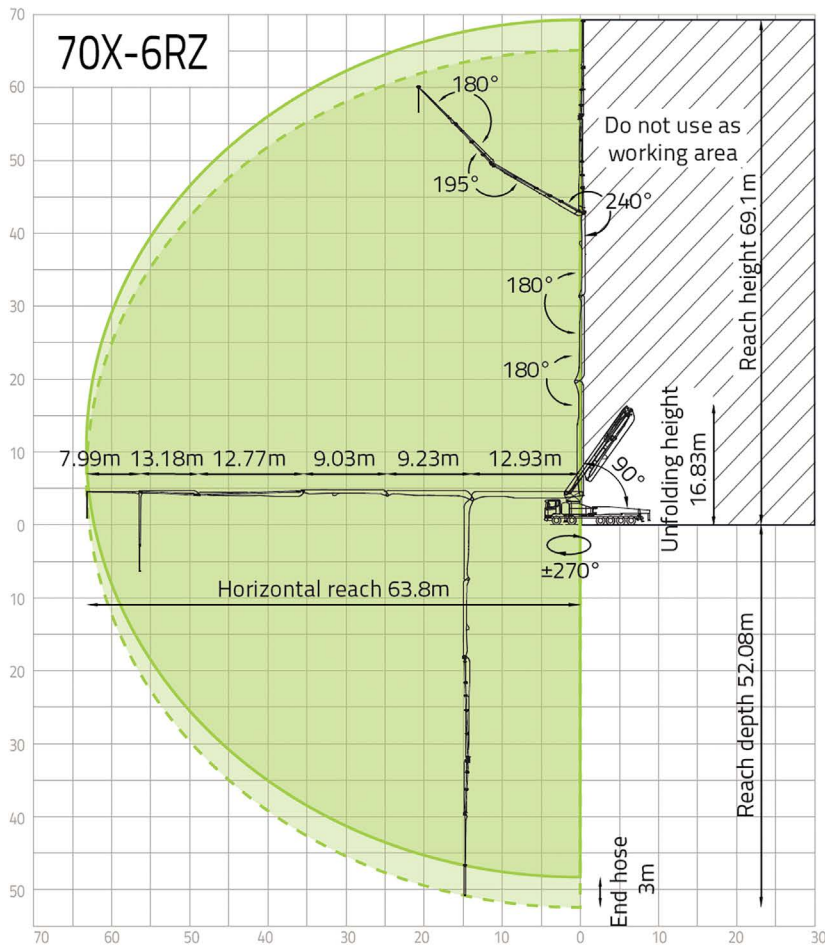
## Technical Specifications

| PUMP                         |                    |           |
|------------------------------|--------------------|-----------|
| Max. output                  | m <sup>3</sup> / h | 82        |
| Max. pressure                | bar                | 85        |
| Delivery cylinder            | mm                 | 200       |
| Stroke                       | mm                 | 10000     |
| BOOM                         |                    |           |
| Reach height                 | m                  | 35.5      |
| Horizontal reach (gross/net) | m                  | 31.2 / 28 |
| Reach depth                  | m                  | 23.3      |
| Unfolding height             | m                  | 6.9       |
| Sections                     | -                  | 5         |
| Folding system               | -                  | Z         |
| End hose length              | m                  | 3         |
| Delivery line                | mm                 | DN 125    |
| TRUCK MIXER                  |                    |           |
| Nominal capacity             | m <sup>3</sup>     | 9.1       |
| Drum geometric volume        | m <sup>3</sup>     | 15.05     |
| Max. drum speed              | rpm                | 14        |
| Water tank                   | L                  | 600       |

\*All data are maximum theoretical values



## Reach information diagram, support



## Configurations (Optional \*\*\* )

### Pumping System

APC ( Accurate Pumping Control )  
 CPC ( Condition-adaptive Pumping Control )  
 ECO ( Eco. Pumping )  
 Pumping concrete status identification and prompt\*\*\*  
 MPC ( Multi-mode Pumping Control )\*\*\*

### Hopper

Streamline hopper  
 Double door hopper cover  
 Bar-type grille  
 Hopper vibrator  
 Cleaning ball stopper  
 Chrome-plated concrete cylinder  
 Wear-resistant S pipe  
 Carbide wear plate  
 Automatic forward/reverse agitator rotation  
 S-valve swinging speed control

### Operation and Maintenance

Spacious platform for service access  
 Built-in filter element  
 Central grease lubrication system

Mushroom button for horn  
 Radio remote control  
 Remote engine off  
 Self-diagnosis and monitoring  
 Material level sensor

### Cleaning

Water tank, 600L  
 Water pump, 70L/min, 15bar  
 Hose reel for low pressure water pump, 10m  
 Quick-connect water inlet

### Safety

Reversing camera system  
 360° surround camera system  
 EPC ( Emergency Pumping Control )  
 End hose squeeze valve, operable by remote control  
 PAW ( Placing Area Warning ) + GSW ( Ground Support Warning )\*\*\*

### Digital Management

ZOOMLINK APP

### Support

SSM ( Standard Support Mode ) ( Full Support/OSS/FS/LF/RF )  
 iSM ( intelligent Support Mode )\*\*\*

### Placing Boom

OBF ( One-joystick Boom Fold/Unfold )  
 OBP ( One-joystick Boom Place )  
 ABC ( Active Boom Control )  
 ARC ( Active Boom Rotation Control )  
 iMMC ( Intelligent Multi-arm Motion Control )

### Delivery Line

Snap pipe coupling  
 End hose, 3m, DN 100

### Lighting

Hopper light and Rear hopper light, LED  
 Support area spotlight, LED  
 Support indicator light, LED  
 Tipping warning light, LED  
 Side-marker lamp, LED







# TRUCK MOUNTED CONCRETE PUMPS

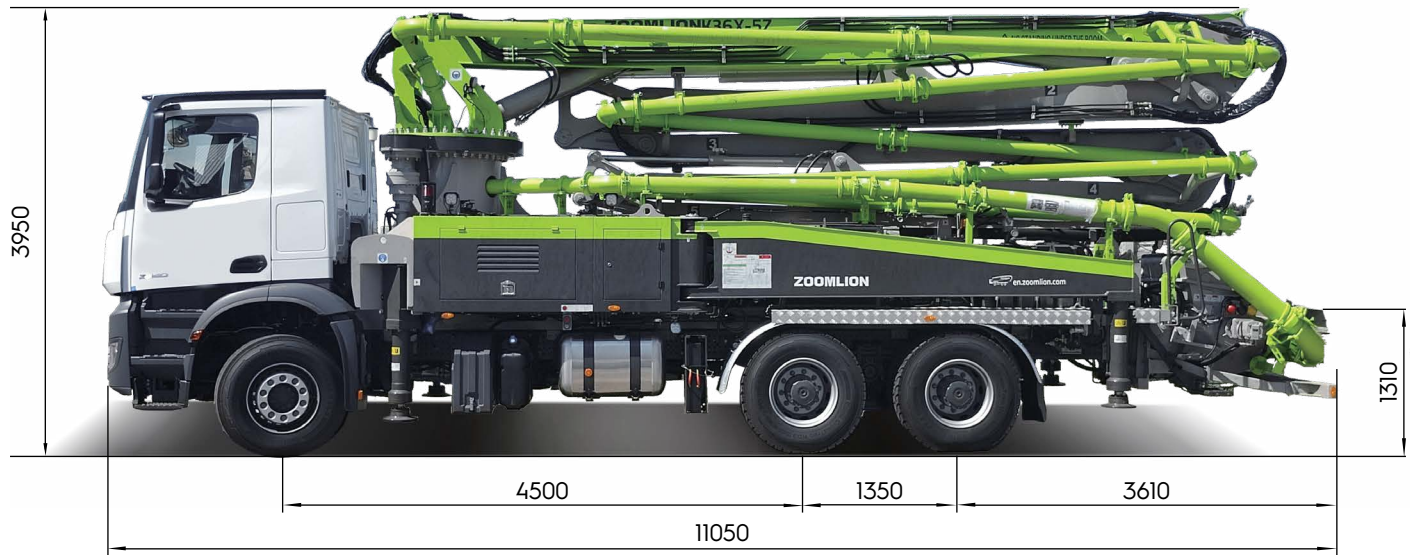
Zoomlion concrete pumps are characterized by energy efficiency, reliability, and advanced technology, including self-diagnostics and innovative systems for easy maintenance.

They are designed for long-term use, capable of handling over 400,000 m<sup>3</sup> of concrete without cracking.





# ZL36X-5Z



**Note:** Standard version. Dimensions and weights depend on truck, pump model and equipment. Dimensions are in mm. Example based on Mercedes-Benz Arocs 5 2640 6 x 4. For illustration only. Actual products may vary.

## Technical Specifications

### BOOM

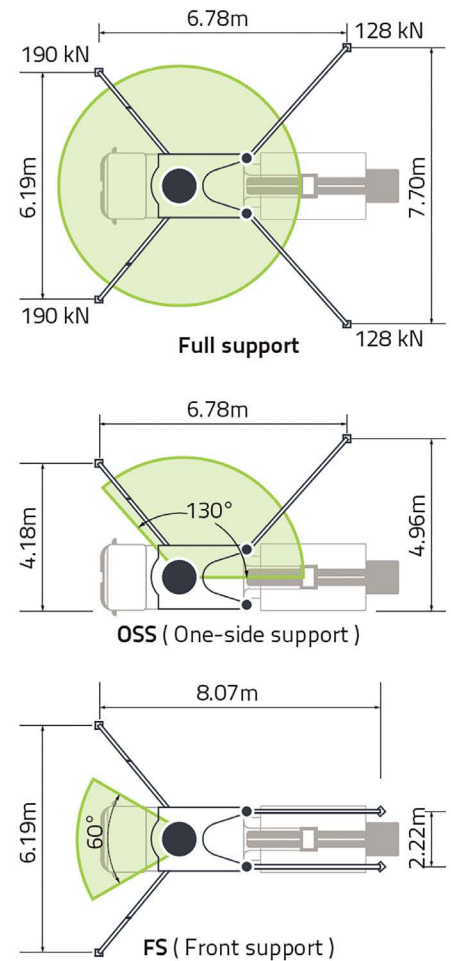
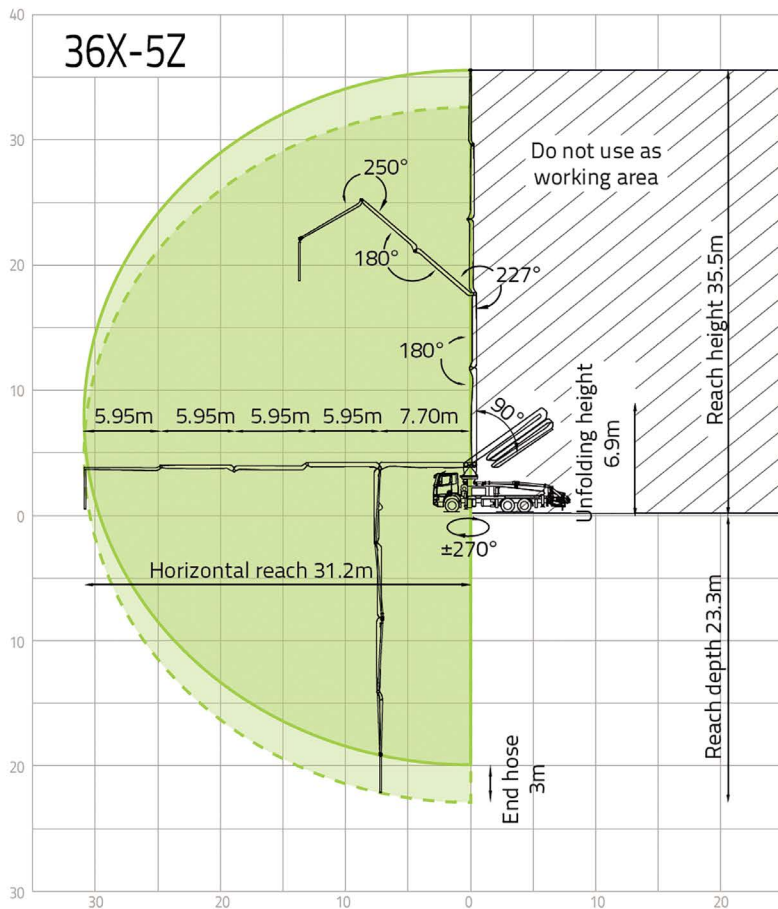
|                              |    |           |
|------------------------------|----|-----------|
| Reach height                 | m  | 35.5      |
| Horizontal reach (gross/net) | m  | 31.2 / 28 |
| Reach depth                  | m  | 23.3      |
| Unfolding height             | m  | 6.9       |
| Sections                     | -  | 5         |
| Folding system               | -  | Z         |
| End hose length              | m  | 3         |
| Delivery line                | mm | DN 125    |

### PUMP

|                   |                    |       |
|-------------------|--------------------|-------|
| Max. output       | m <sup>3</sup> / h | 170   |
| Max. pressure     | bar                | 88    |
| Delivery cylinder | mm                 | φ 260 |
| Stroke            | mm                 | 2100  |

\*All data are maximum theoretical values

## Reach information diagram, support



## Configurations (Optional \*\*\* )

### Pumping System

CPC ( Condition-adaptive Pumping Control )  
 ECO ( Eco. Pumping )  
 Pumping concrete status identification and prompt\*\*\*  
 MPC ( Multi-mode Pumping Control )\*\*\*

### Hopper

Streamline hopper  
 Aluminium alloy hopper cover  
 Bar-type grille  
 Hopper vibrator  
 Cleaning ball stopper  
 Chrome-plated concrete cylinder  
 Wear-resistant S pipe  
 Carbide wear plate  
 Quick-release concrete piston  
 Automatic forward/reverse agitator rotation  
 Labour-saving device for hopper cover\*\*\*

### Operation and Maintenance

Diesel tank in rear outrigger  
 Central grease lubrication system  
 Mushroom button for horn  
 Self-diagnosis and monitoring

### Cleaning

Water tank, 550L  
 Water pump, 70L/min, 13bar  
 Water pump, 20L/min, 200bar  
 Hose reel for low pressure water pump, 10m  
 Quick-connect water inlet

### Safety

Reversing camera system  
 360° surround camera system  
 OGS ( Outriggers Guidance System )  
 EPC ( Emergency Pumping Control )  
 Emergency hydraulic power interface for boom and outrigger  
 End hose squeeze valve, operable by remote control  
 PAW ( Placing Area Warning ) + GSW ( Ground Support Warning )\*\*\*

### Support

SSM ( Standard Support Mode ) ( Full Support/ OSS/FS/LF/RF )  
 iSM ( intelligent Support Mode )\*\*\*

### Digital Management

ZOOMLINK APP

### Placing Boom

ARC ( Active Boom Rotation Control )\*\*\*

### Delivery Line

Self-locking end hose clamp  
 Snap pipe coupling  
 End hose, 3m, DN 125  
 Double-layer pipes

### Lighting

Boom tip light, LED  
 Hopper light, LED  
 Support area spotlight, LED  
 Pumping warning light, LED  
 Height-marker lamp, LED  
 Side-marker lamp, LED

# ZL38X-5RZ



**Note:** Standard version. Dimensions and weights depend on truck, pump model and equipment. Dimensions are in mm. Example based on Mercedes-Benz Arocs 5 2640 6 x 4. For illustration only. Actual products may vary.

## Technical Specifications

### BOOM

|                              |    |               |
|------------------------------|----|---------------|
| Reach height                 | m  | 37.1          |
| Horizontal reach (gross/net) | m  | 32.36 / 28.76 |
| Reach depth                  | m  | 25.2          |
| Unfolding height             | m  | 7.5           |
| Sections                     | -  | 5             |
| Folding system               | -  | RZ            |
| End hose length              | m  | 3             |
| Delivery line                | mm | DN 125        |

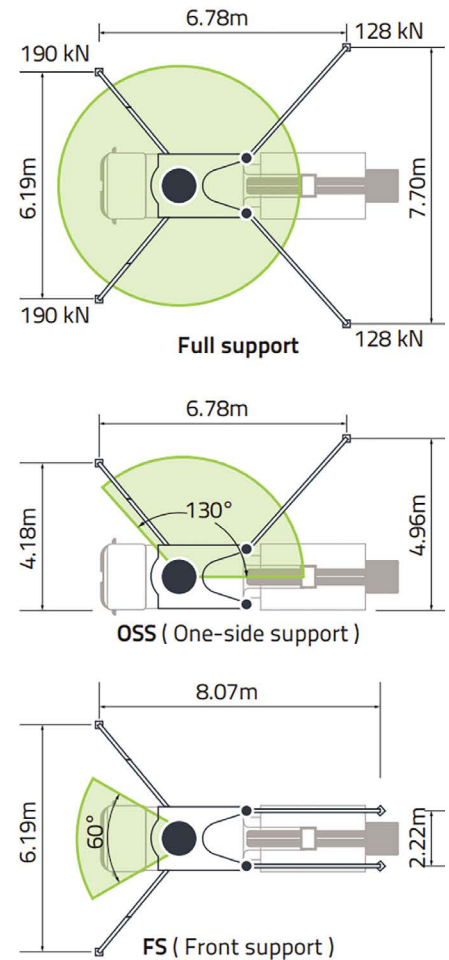
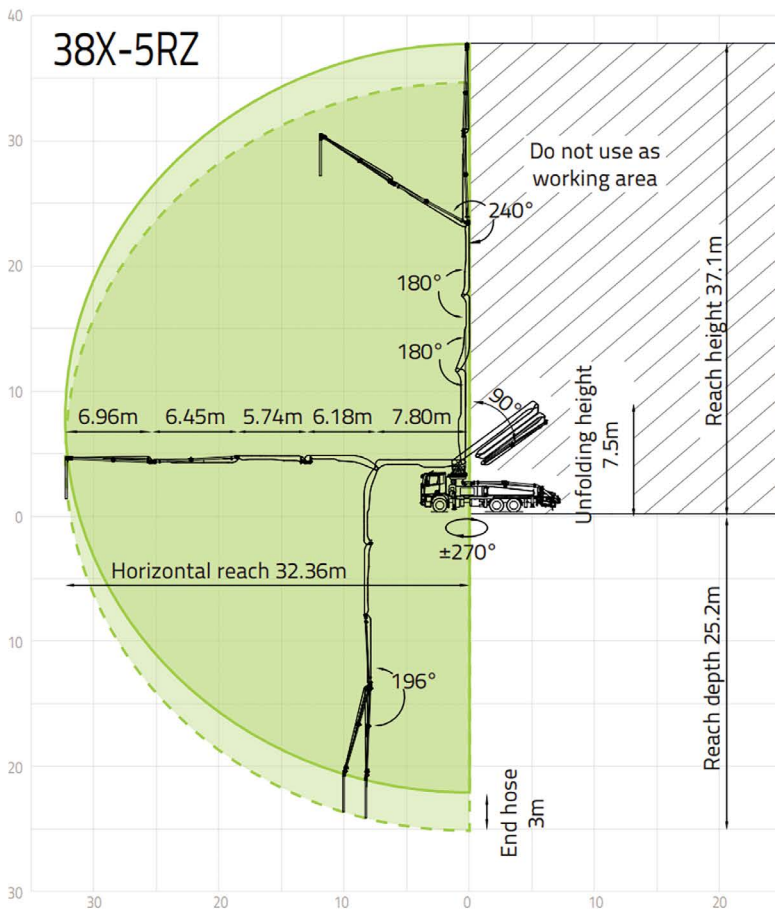
### PUMP

|                   |                    |       |
|-------------------|--------------------|-------|
| Max. output       | m <sup>3</sup> / h | 170   |
| Max. pressure     | bar                | 88    |
| Delivery cylinder | mm                 | φ 260 |
| Stroke            | mm                 | 2100  |

\*All data are maximum theoretical values



## Reach information diagram, support



## Configurations (Optional \*\*\* )

### Pumping System

CPC ( Condition-adaptive Pumping Control )  
 ECO ( Eco. Pumping )  
 Pumping concrete status identification and prompt\*\*\*  
 MPC ( Multi-mode Pumping Control )\*\*\*

### Hopper

Streamline hopper  
 Aluminium alloy hopper cover  
 Bar-type grille  
 Hopper vibrator  
 Cleaning ball stopper  
 Chrome-plated concrete cylinder  
 Wear-resistant S pipe  
 Carbide wear plate  
 Quick-release concrete piston  
 Automatic forward/reverse agitator rotation  
 Labour-saving device for hopper cover\*\*\*

### Operation and Maintenance

Diesel tank in rear outrigger  
 Central grease lubrication system  
 Mushroom button for horn  
 Self-diagnosis and monitoring

### Cleaning

Water tank, 700L  
 Water pump, 70L/min, 13bar  
 Water pump, 20L/min, 200bar  
 Hose reel for low pressure water pump, 10m  
 Quick-connect water inlet

### Safety

Reversing camera system  
 360° surround camera system  
 OGS ( Outriggers Guidance System )  
 EPC ( Emergency Pumping Control )  
 Emergency hydraulic power interface for boom and outrigger  
 End hose squeeze valve, operable by remote control  
 PAW ( Placing Area Warning ) + GSW ( Ground Support Warning )\*\*\*

### Support

SSM ( Standard Support Mode ) ( Full Support/ OSS/FS/LF/RF )  
 iSM ( intelligent Support Mode )\*\*\*

### Digital Management

ZOOMLINK APP

### Placing Boom

ARC ( Active Boom Rotation Control )\*\*\*

### Delivery Line

Self-locking end hose clamp  
 Snap pipe coupling  
 End hose, 3m, DN 125  
 Double-layer pipes

### Lighting

Boom tip light, LED  
 Hopper light, LED  
 Support area spotlight, LED  
 Pumping warning light, LED  
 Height-marker lamp, LED  
 Side-marker lamp, LED

# ZL43X-5RZ



**Note:** Standard version. Dimensions and weights depend on truck, pump model and equipment. Dimensions are in mm. Example based on Mercedes-Benz Arocs 5 3240 8 x 4. For illustration only. Actual products may vary.

## Technical Specifications

### BOOM

|                              |    |               |
|------------------------------|----|---------------|
| Reach height                 | m  | 42.3          |
| Horizontal reach (gross/net) | m  | 37.65 / 34.16 |
| Reach depth                  | m  | 29.68         |
| Unfolding height             | m  | 9.79          |
| Sections                     | -  | 5             |
| Folding system               | -  | RZ            |
| End hose length              | m  | 3             |
| Delivery line                | mm | DN 125        |

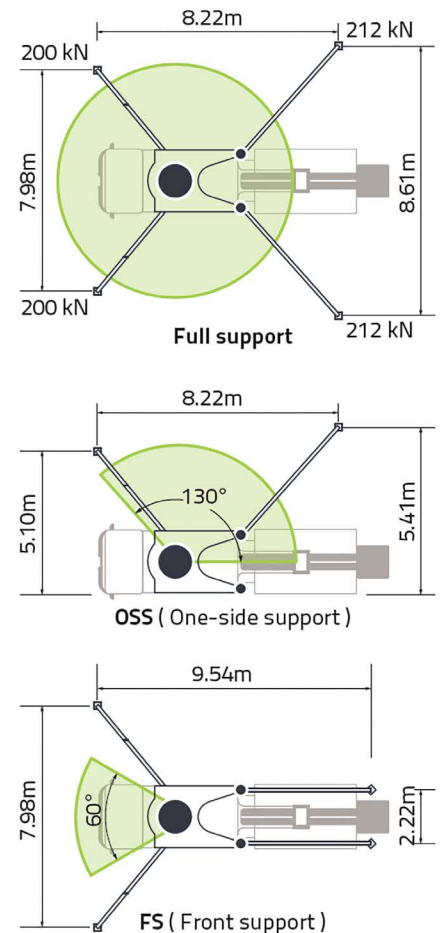
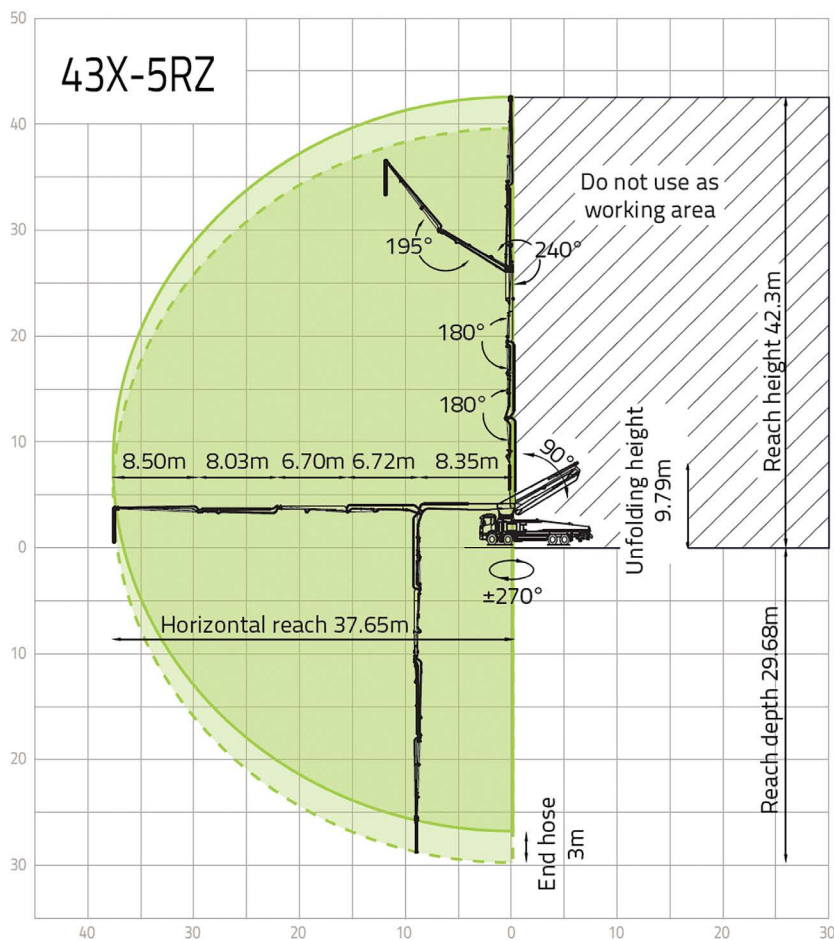
### PUMP

|                   |                    |       |
|-------------------|--------------------|-------|
| Max. output       | m <sup>3</sup> / h | 170   |
| Max. pressure     | bar                | 88    |
| Delivery cylinder | mm                 | φ 260 |
| Stroke            | mm                 | 2100  |

\*All data are maximum theoretical values



## Reach information diagram, support



## Configurations (Optional \*\*\* )

### Pumping System

CPC ( Condition-adaptive Pumping Control )  
 ECO ( Eco. Pumping )  
 Pumping concrete status identification and prompt\*\*\*  
 MPC ( Multi-mode Pumping Control )\*\*\*

### Hopper

Streamline hopper  
 Aluminium alloy hopper cover  
 Bar-type grille  
 Hopper vibrator  
 Cleaning ball stopper  
 Chrome-plated concrete cylinder  
 Wear-resistant S pipe  
 Carbide wear plate  
 Quick-release concrete piston  
 Automatic forward/reverse agitator rotation  
 Labour-saving device for hopper cover\*\*\*

### Operation and Maintenance

Diesel tank in rear outrigger  
 Central grease lubrication system  
 Mushroom button for horn  
 Self-diagnosis and monitoring

### Cleaning

Water tank, 700L  
 Water pump, 70L/min, 13bar  
 Water pump, 20L/min, 200bar  
 Hose reel for low pressure water pump, 10m  
 Quick-connect water inlet

### Safety

Reversing camera system  
 360° surround camera system  
 OGS ( Outriggers Guidance System )  
 EPC ( Emergency Pumping Control )  
 Emergency hydraulic power interface for boom and outrigger  
 End hose squeeze valve, operable by remote control  
 PAW ( Placing Area Warning )  
 + GSW ( Ground Support Warning )\*\*\*

### Support

SSM ( Standard Support Mode ) ( Full Support/ OSS/FS/LF/RF )  
 iSM ( intelligent Support Mode )\*\*\*

### Digital Management

ZOOMLINK APP

### Placing Boom

ARC ( Active Boom Rotation Control )\*\*\*

### Delivery Line

Self-locking end hose clamp  
 Snap pipe coupling  
 End hose, 3m, DN 125  
 Double-layer pipes

### Lighting

Boom tip light, LED  
 Hopper light, LED  
 Support area spotlight, LED  
 Pumping warning light, LED  
 Height-marker lamp, LED  
 Side-marker lamp, LED

# ZL50X-6RZ



**Note:** Standard version. Dimensions and weights depend on truck, pump model and equipment. Dimensions are in mm. Example based on Mercedes-Benz Arocs 5 4446. For illustration only. Actual products may vary.

**\*Also available on 5 axles chassis**

## Technical Specifications

### BOOM

|                              |    |              |
|------------------------------|----|--------------|
| Reach height                 | m  | 49.3         |
| Horizontal reach (gross/net) | m  | 44.3 / 39.62 |
| Reach depth                  | m  | 35.3         |
| Unfolding height             | m  | 13.8         |
| Sections                     | -  | 6            |
| Folding system               | -  | RZ           |
| End hose length              | m  | 3            |
| Delivery line                | mm | DN 125       |

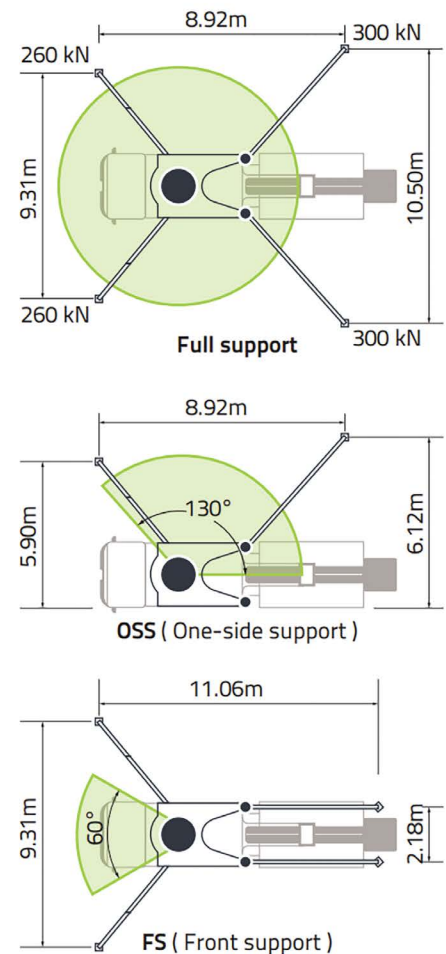
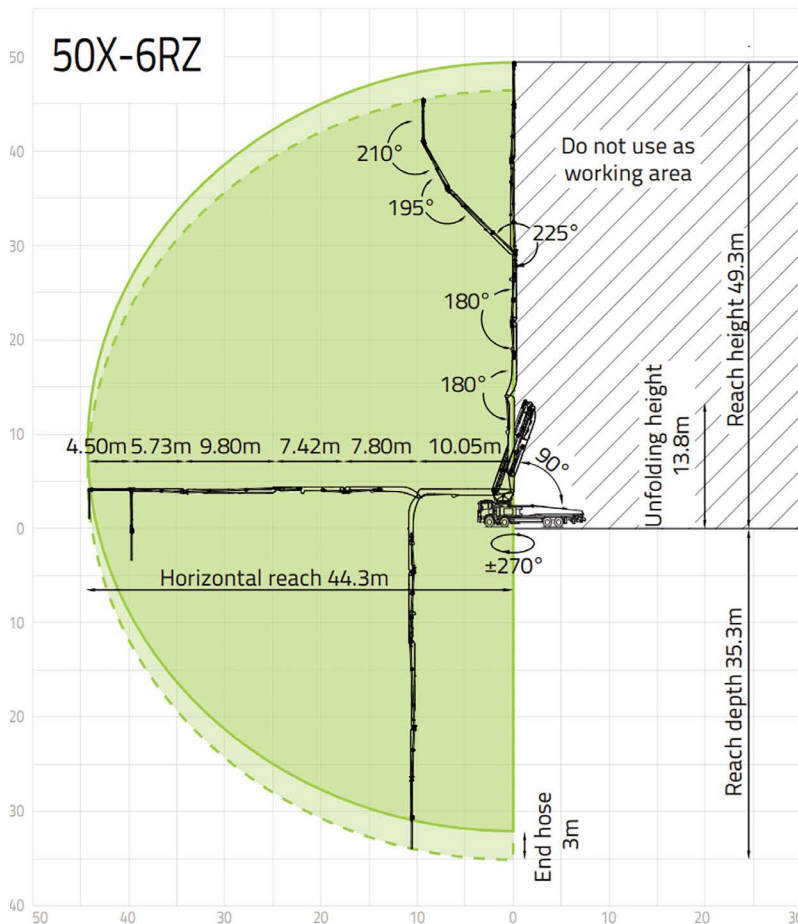
### PUMP

|                   |                    |        |
|-------------------|--------------------|--------|
| Max. output       | m <sup>3</sup> / h | 170    |
| Max. pressure     | bar                | 85     |
| Delivery cylinder | mm                 | fi 260 |
| Stroke            | mm                 | 2100   |

\*All data are maximum theoretical values



## Reach information diagram, support



## Configurations (Optional \*\*\* )

### Pumping System

CPC ( Condition-adaptive Pumping Control )  
 ECO ( Eco. Pumping )  
 Pumping concrete status identification and prompt\*\*\*  
 MPC ( Multi-mode Pumping Control )\*\*\*

### Hopper

Streamline hopper  
 Aluminium alloy hopper cover  
 Bar-type grille  
 Hopper vibrator  
 Cleaning ball stopper  
 Chrome-plated concrete cylinder  
 Wear-resistant S pipe  
 Carbide wear plate  
 Quick-release concrete piston  
 Automatic forward/reverse agitator rotation  
 Labour-saving device for hopper cover\*\*\*

### Operation and Maintenance

Diesel tank in rear outrigger  
 Two separate hydraulic oil tanks  
 Built-in filter element  
 Central grease lubrication system

Mushroom button for horn  
 Self-diagnosis and monitoring

### Cleaning

Water tank, 700L  
 Water pump, 70L/min, 13bar  
 Water pump, 20L/min, 200bar  
 Hose reel for low pressure water pump, 10m  
 Quick-connect water inlet

### Safety

Reversing camera system  
 360° surround camera system  
 OGS ( Outriggers Guidance System )  
 EPC ( Emergency Pumping Control )  
 Emergency hydraulic power interface for boom and outrigger  
 End hose squeeze valve, operable by remote control  
 PAW ( Placing Area Warning )  
 + GSW ( Ground Support Warning )\*\*\*

### Support

SSM ( Standard Support Mode ) ( Full Support/ OSS/FS/LF/RF )

iSM ( intelligent Support Mode )\*\*\*

### Digital Management

ZOOMLINK APP

### Placing Boom

ARC ( Active Boom Rotation Control )\*\*\*  
 ABC ( Active Boom Control)

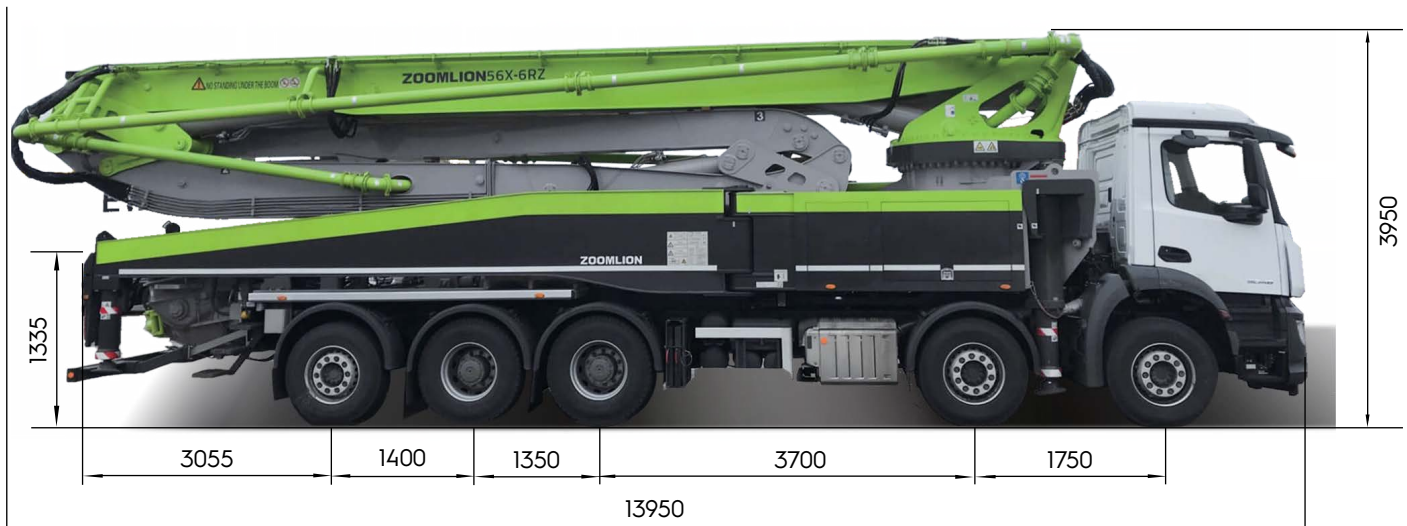
### Delivery Line

Self-locking end hose clamp  
 Snap pipe coupling  
 End hose, 3m, DN 125  
 Double-layer pipes

### Lighting

Boom tip light, LED  
 Hopper light, LED  
 Support area spotlight, LED  
 Pumping warning light, LED  
 Height-marker lamp, LED  
 Side-marker lamp, LED

# ZL56X-6RZ



**Note:** Standard version. Dimensions and weights depend on truck, pump model and equipment. Dimensions are in mm. Example based on Mercedes-Benz Arocs 5 5246. For illustration only. Actual products may vary.

## Technical Specifications

### BOOM

|                              |    |         |
|------------------------------|----|---------|
| Reach height                 | m  | 56      |
| Horizontal reach (gross/net) | m  | 51 / 48 |
| Reach depth                  | m  | 40.2    |
| Unfolding height             | m  | 15.8    |
| Sections                     | -  | 6       |
| Folding system               | -  | RZ      |
| End hose length              | m  | 3       |
| Delivery line                | mm | DN 125  |

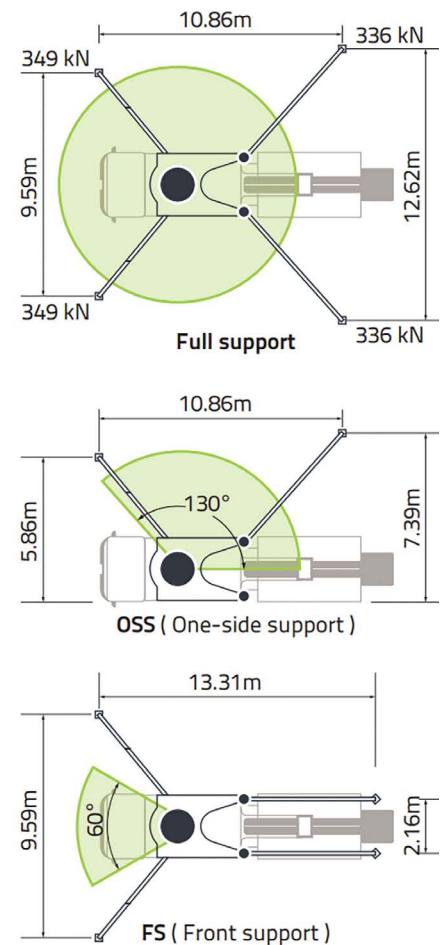
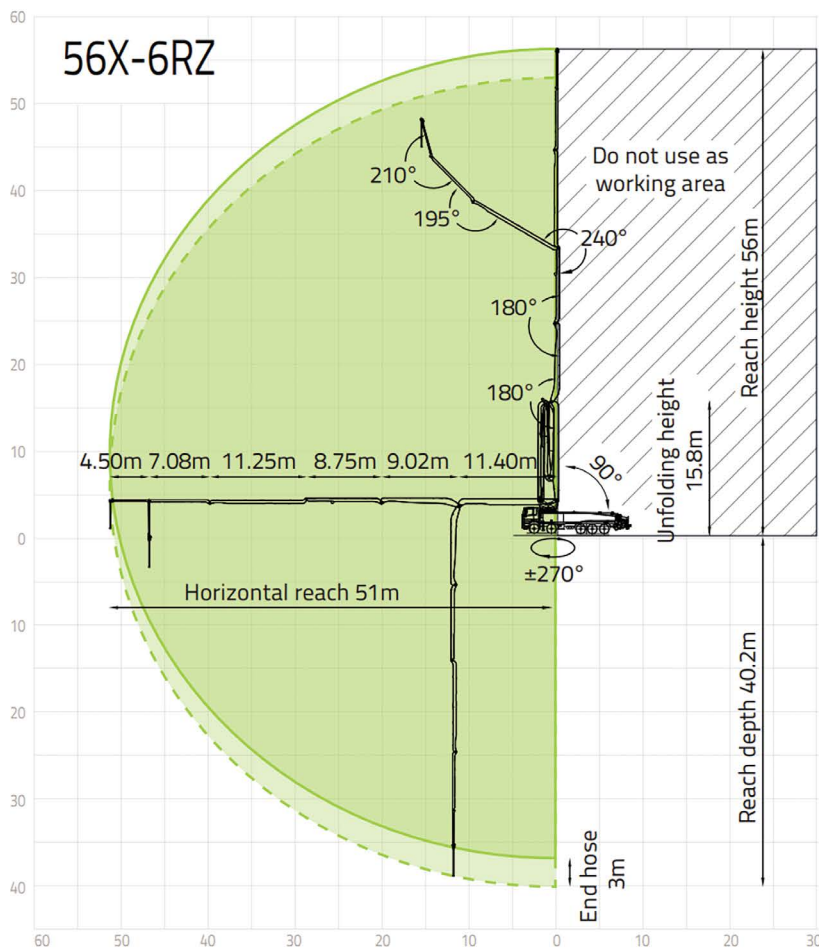
### PUMP

|                   |                    |       |
|-------------------|--------------------|-------|
| Max. output       | m <sup>3</sup> / h | 180   |
| Max. pressure     | bar                | 113   |
| Delivery cylinder | mm                 | φ 260 |
| Stroke            | mm                 | 2100  |

\*All data are maximum theoretical values



## Reach information diagram, support



## Configurations (Optional \*\*\* )

### Pumping System

APC ( Accurate Pumping Control )  
 CPC ( Condition-adaptive Pumping Control )  
 ECO ( Eco. Pumping )  
 Synchronized dual-concrete piston retraction  
 Pumping concrete status identification and prompt\*\*\*  
 MPC ( Multi-mode Pumping Control )\*\*\*

### Hopper

Streamline hopper  
 Aluminium alloy hopper cover  
 Bar-type grille  
 Hopper vibrator  
 Cleaning ball stopper  
 Chrome-plated concrete cylinder  
 Wear-resistant S pipe  
 Carbide wear plate  
 Quick-release concrete piston  
 Automatic forward/reverse agitator rotation  
 Labour-saving device for hopper cover\*\*\*

### Operation and Maintenance

Diesel tank in rear outrigger  
 Two separate hydraulic oil tanks

Built-in filter element  
 Central grease lubrication system  
 Mushroom button for horn  
 Self-diagnosis and monitoring

### Cleaning

Water tank, 550L  
 Water pump, 70L/min, 13bar  
 Water pump, 20L/min, 200bar  
 Hose reel for low pressure water pump, 10m  
 Quick-connect water inlet

### Safety

Reversing camera system  
 360° surround camera system  
 OGS ( Outriggers Guidance System )  
 EPC ( Emergency Pumping Control )  
 Emergency hydraulic power interface for boom and outrigger  
 End hose squeeze valve, operable by remote control  
 PAW ( Placing Area Warning )  
 + GSW ( Ground Support Warning )\*\*\*

### Support

SSM ( Standard Support Mode ) ( Full Support/OSS/FS/LF/RF )  
 iSM ( intelligent Support Mode )\*\*\*

### Digital Management

ZOOMLINK APP

### Placing Boom

ARC ( Active Boom Rotation Control )\*\*\*  
 ABC ( Active Boom Control)

### Delivery Line

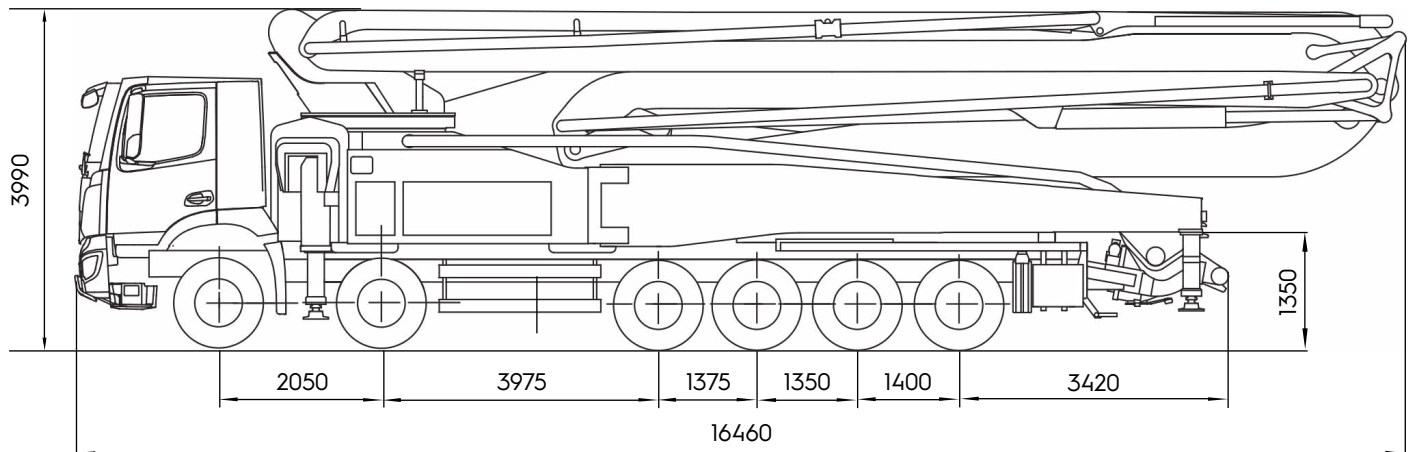
Self-locking end hose clamp  
 Snap pipe coupling  
 End hose, 3m, DN 125  
 Double-layer pipes

### Lighting

Boom tip light, LED  
 Hopper light, LED  
 Support area spotlight, LED  
 Pumping warning light, LED  
 Height-marker lamp, LED  
 Side-marker lamp, LED

# ZL66X-6RZ

NEW!



**Note:** Standard version. Dimensions and weights depend on truck, pump model and equipment. Dimensions are in mm. Example based on Mercedes-Benz. For illustration only. Actual products may vary.

## Technical Specifications

### BOOM

|                              |    |             |
|------------------------------|----|-------------|
| Reach height                 | m  | 65.1        |
| Horizontal reach (gross/net) | m  | 59.9 / 56.5 |
| Reach depth                  | m  | 47.3        |
| Unfolding height             | m  | 15.28       |
| Sections                     | -  | 6           |
| Folding system               | -  | RZ          |
| End hose length              | m  | 3           |
| Delivery line                | mm | DN 125      |

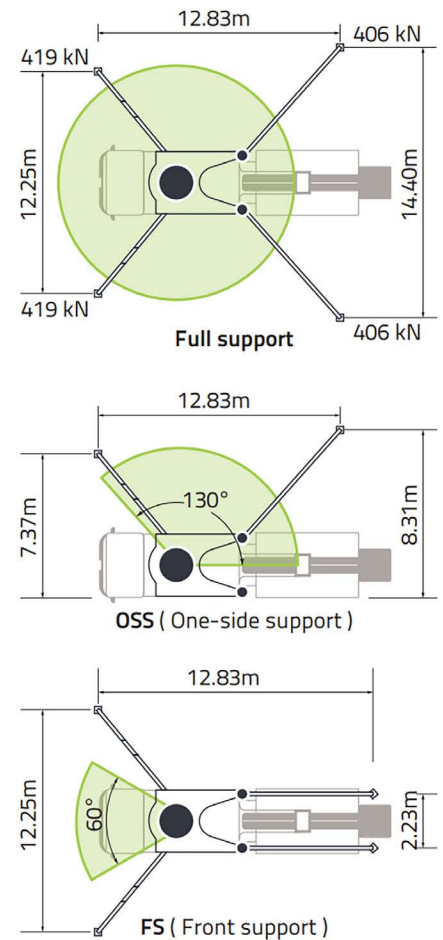
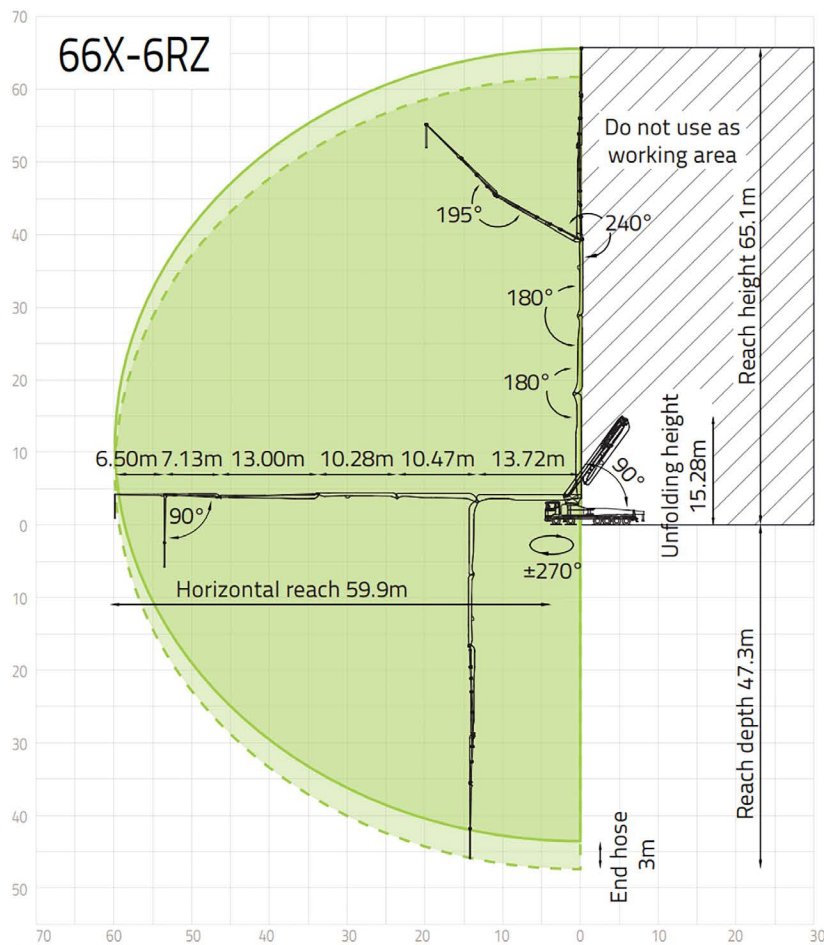
### PUMP

|                   |                    |       |
|-------------------|--------------------|-------|
| Max. output       | m <sup>3</sup> / h | 180   |
| Max. pressure     | bar                | 105   |
| Delivery cylinder | mm                 | φ 260 |
| Stroke            | mm                 | 2100  |

\*All data are maximum theoretical values



## Reach information diagram, support



## Configurations (Optional \*\*\* )

### Pumping System

APC ( Accurate Pumping Control )  
CPC ( Condition-adaptive Pumping Control )  
ECO ( Eco. Pumping )  
Synchronized dual-concrete piston retraction  
Pumping concrete status identification and prompt\*\*\*  
MPC ( Multi-mode Pumping Control )\*\*\*

### Hopper

Streamline hopper  
Aluminium alloy hopper cover  
Bar-type grille  
Hopper vibrator  
Cleaning ball stopper  
Chrome-plated concrete cylinder  
Wear-resistant S pipe  
Carbide wear plate  
Quick-release concrete piston  
Automatic forward/reverse agitator rotation  
Labour-saving device for hopper cover\*\*\*

### Operation and Maintenance

Diesel tank in rear outrigger  
Two separate hydraulic oil tanks

Built-in filter element  
Central grease lubrication system  
Mushroom button for horn  
Self-diagnosis and monitoring

### Cleaning

Water tank, 900L  
Water pump, 70L/min, 13bar  
Water pump, 20L/min, 200bar  
Hose reel for low pressure water pump, 10m  
Quick-connect water inlet

### Safety

Reversing camera system  
360° surround camera system  
OGS ( Outriggers Guidance System )  
EPC ( Emergency Pumping Control )  
Emergency hydraulic power interface for boom and outrigger  
End hose squeeze valve, operable by remote control  
PAW ( Placing Area Warning )  
+ GSW ( Ground Support Warning )\*\*\*

### Support

SSM ( Standard Support Mode ) ( Full Support/OSS/FS/LF/RF )  
iSM ( intelligent Support Mode )\*\*\*

### Digital Management

ZOOMLINK APP

### Placing Boom

ARC ( Active Boom Rotation Control )\*\*\*  
ABC ( Active Boom Control)

### Delivery Line

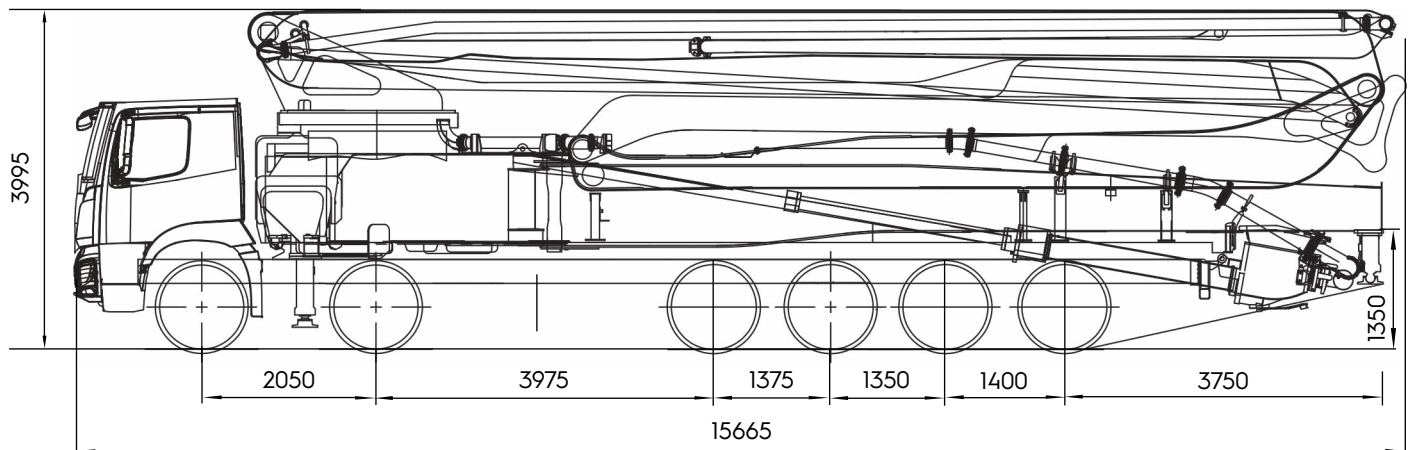
Snap pipe coupling  
End hose, 3m, DN 125  
Double-layer pipes

### Lighting

Boom light and boom tip light, LED  
Hopper light, LED  
Support area spotlight, LED  
Pumping warning light, LED  
Slewing warning light, LED  
Height-marker lamp, LED  
Side-marker lamp, LED

# ZL70X-6RZ

NEW!



**Note:** Standard version. Dimensions and weights depend on truck, pump model and equipment. Dimensions are in mm. Example based on Mercedes-Benz Arocs 6553. For illustration only. Actual products may vary.

## Technical Specifications

### BOOM

|                              |    |             |
|------------------------------|----|-------------|
| Reach height                 | m  | 69.1        |
| Horizontal reach (gross/net) | m  | 63.8 / 60.3 |
| Reach depth                  | m  | 52.08       |
| Unfolding height             | m  | 16-83       |
| Sections                     | -  | 6           |
| Folding system               | -  | RZ          |
| End hose length              | m  | 3           |
| Delivery line                | mm | DN 125      |

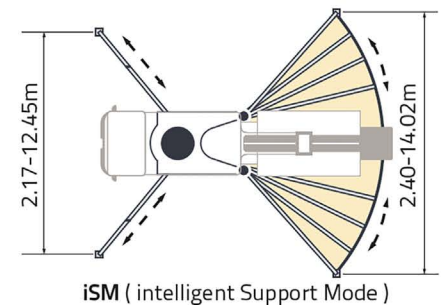
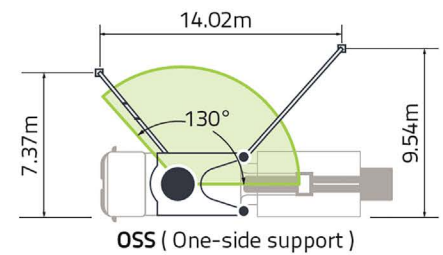
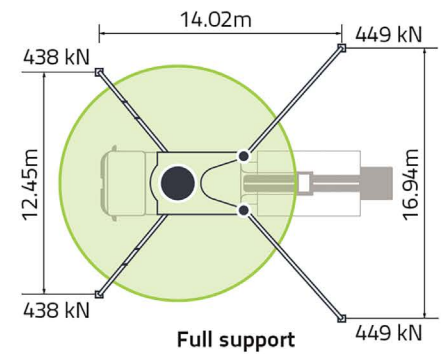
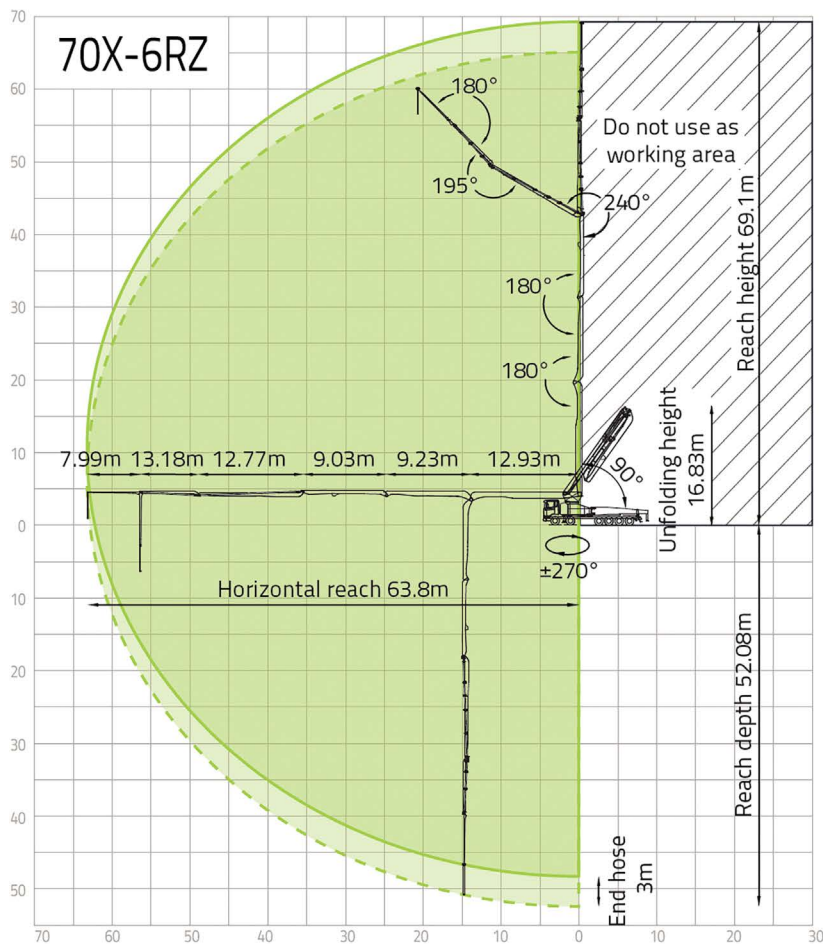
### PUMP

|                   |                    |       |
|-------------------|--------------------|-------|
| Max. output       | m <sup>3</sup> / h | 180   |
| Max. pressure     | bar                | 113   |
| Delivery cylinder | mm                 | φ 260 |
| Stroke            | mm                 | 2100  |

\*All data are maximum theoretical values



## Reach information diagram, support



## Configurations (Optional \*\*\* )

### Pumping System

APC ( Accurate Pumping Control )  
CPC ( Condition-adaptive Pumping Control )  
ECO ( Eco. Pumping )  
Synchronized dual-concrete piston retraction  
Pumping concrete status identification and prompt\*\*\*

### Hopper

Streamline hopper  
Aluminium alloy hopper cover  
Bar-type grille  
Hopper vibrator  
Cleaning ball stopper  
Chrome-plated concrete cylinder  
Wear-resistant S pipe  
Carbide wear plate  
Quick-release concrete piston  
Automatic forward/reverse agitator rotation  
Labour-saving device for hopper cover\*\*\*  
S-valve swinging speed control

### Operation and Maintenance

Hose rack on outrigger  
Diesel tank in rear outrigger  
Two separate hydraulic oil tanks  
Built-in filter element  
Central grease lubrication system

Mushroom button for horn  
Dual radio remote controls  
Remote engine off  
OTA ( Over-the-Air Update )  
Self-diagnosis and monitoring

### Cleaning

Water tank, 550L  
Water pump, 70L/min, 13bar  
Water pump, 15L/min, 200bar  
Hose reel for low pressure water pump, 10m  
Quick-connect water inlet

### Safety

Reversing camera system  
360° surround camera system  
OGS ( Outriggers Guidance System )  
EPC ( Emergency Pumping Control )  
Emergency hydraulic power interface for boom and outrigger  
End hose squeeze valve, operable by remote control  
PAW ( Placing Area Warning )  
+ GSW ( Ground Support Warning )\*\*\*

### Support

SSM ( Standard Support Mode ) ( Full Support/OSS/FS/LF/RF )

iSM ( intelligent Support Mode )\*\*\*

### Digital Management

ZOOMLINK APP

### Placing Boom

OBF ( One-joystick Boom Fold/Unfold )  
OBP ( One-joystick Boom Place )  
ARC ( Active Boom Rotation Control )\*\*\*  
ABC ( Active Boom Control )

### Delivery Line

Snap pipe coupling  
End hose, 3m, DN 125  
Double-layer pipes

### Lighting

Boom light and boom tip light, LED  
Hopper light and Rear hopper, LED  
Baseframe access light, LED  
Support area spotlight, LED  
Support indicator spotlight, LED  
Tipping warning light, LED  
Pumping warning light, LED  
Slewing warning light, LED  
Stop light, LED  
Height-marker lamp, LED  
Side-marker lamp, LED







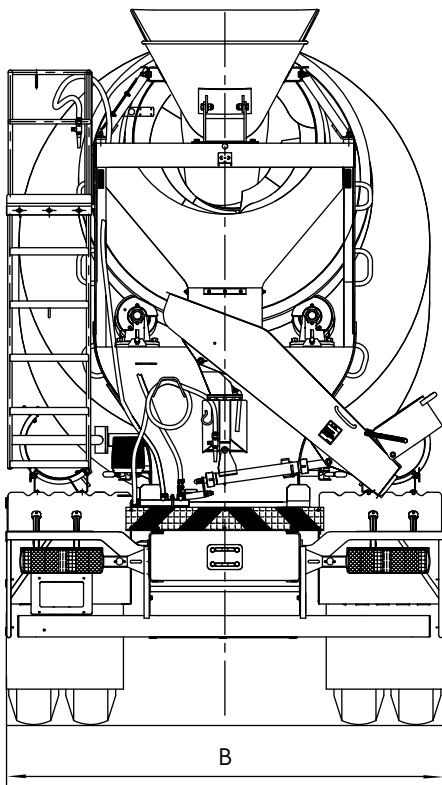
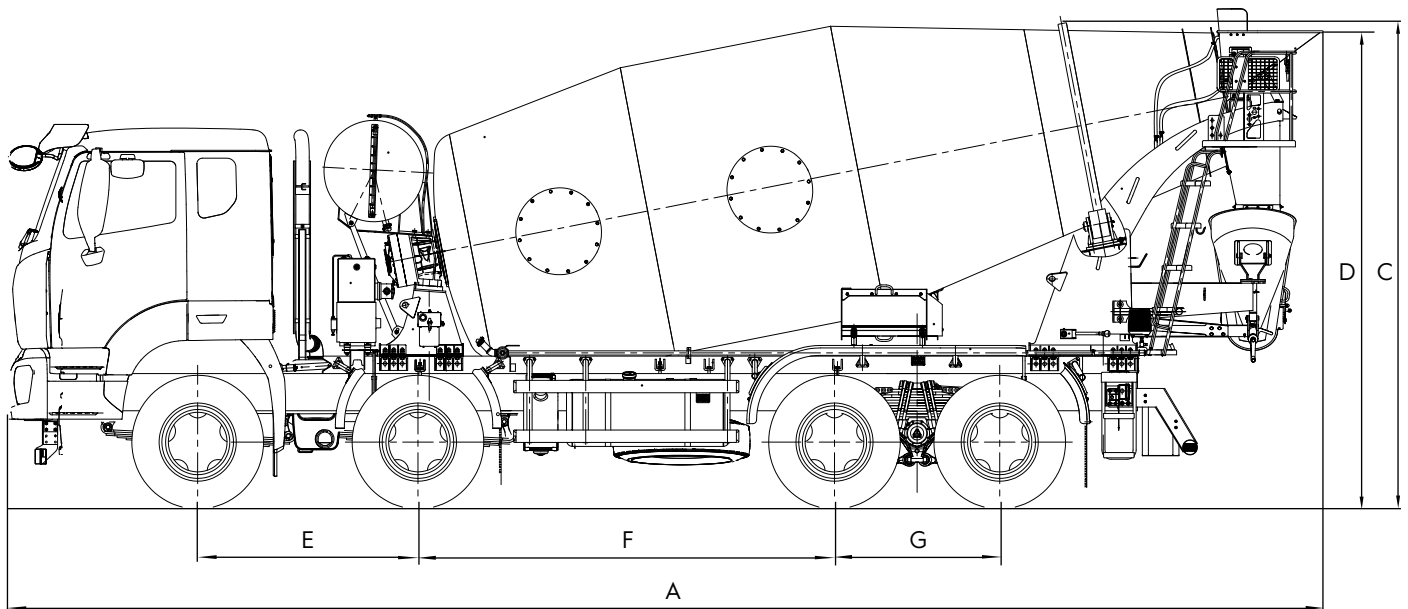
# TRUCK MIXERS

Zoomlion's truck mixers combine advanced technology with a robust design, ensuring reliable and efficient concrete mixing and transport. Built for durability and performance, they are the ideal choice for modern construction needs.



# K9JB Series

NEW!



**Note:** Standard version. Dimensions and weights depend on truck, pump model and equipment. Dimensions are in mm. Example based on Mercedes-Benz Arocs 6553. For illustration only. Actual products may vary.

## Technical Specifications

### OVERALL PARAMETERS

|                           |    |       |
|---------------------------|----|-------|
| A - length                | mm | 9159  |
| B - width                 | mm | 2500  |
| C - height                | mm | 3862  |
| D - feeding hopper height | mm | 3764  |
| Curb weight               | kg | 13170 |

### MIXING DRUM PARAMETERS

|                       |                |      |
|-----------------------|----------------|------|
| Water line            | m <sup>3</sup> | 9    |
| Inclination           | °              | 11.9 |
| Filling rate          | %              | 56   |
| Diameter              | mm             | 2270 |
| Mixing speed          | rpm            | 0-16 |
| Water tank capacity   | L              | 450  |
| Water supply pressure | bar            | 4    |

\*All data are maximum theoretical values

### CONFIGURATIONS

|  |   |
|--|---|
| The latest generation of double spiral T-shaped blades | • |
| Integrated sub-beam structure                          | • |
| Unibody aluminum alloy tire cover                      | • |
| Anti-skid ladder                                       | • |
| Special dry feeding hopper                             | • |
| MIC system   | • |







SAVE CONTACT

# Have Questions? We Have Answers!

At GBM, we value **strong partnerships** and **open communication**. Whether you have questions about our products and services, need expert advice, or are looking for tailored solutions, **our team is always ready to assist you**.

**Feel free to reach out** to us via phone, email, or visit our offices. We are committed to providing you with the best support and ensuring a seamless experience.



## Contact Information

+43 66 488 166 847

office@g-bm.at

www.g-bm.at

## Address - Headquarters

GBM Maschinenvertrieb GmbH  
Blumauerstraße 200A H1/3  
2601 Sollenau





ZOOMLION

2

专线 400-887-6677 中联重科制造  
www.zoomlion.com

ZLJ5440THBB



SAVE CONTACT



# IMPRESSUM

## CONTENT

DESIGN AND PREPARATION: EVA ZALAZNIK  
PUBLISHER: GBM MASCHINENVERTRIEB GMBH  
PRINT: TISKARNA PRINT POINT D.O.O.  
PRINT RUN 1: 150 KOS

## COMPANY

GBM MASCHINENVERTRIEB GMBH  
+43 66 488 166 847  
OFFICE@G-BM.AT  
WWW.G-BM.AT  
COMP REG NR.: FN492788p  
VAT: ATU73355273  
BLUMAUERSTRASSE 200A H1/3, 2601 SOLLENAU  
COMPANY REPRESENTATIVE: VINZENZ WUKITS

## COPYRIGHT

THIS CATALOG IS COPYRIGHT PROTECTED. REPRINTING OR REPRODUCING ANY PART OF IT IS ONLY PERMITTED WITH THE CONSENT OF GBM MASCHINENVERTRIEB GMBH. THE IMAGES ARE FOR ILLUSTRATIVE PURPOSES ONLY. WE DO NOT ACCEPT LIABILITY FOR ANY PRINTING ERRORS AND APOLOGIZE FOR ANY MISTAKES.



**ZOOMLION**